

Cipherium G1600R



G1600R is a Wireless Service Gateway specially designed for medium-scale wireless and wired network deployment and management.

It provides administrators to effectively manage different categories of users on both wireless and wired network, including authentication, authorization, accounting, and security.

Key Features –

Integrated AAA support

Failover on dual WAN ports

Multiple authentication methods

On-demand accounts for guests

Role-based and policy-based access control

Per-user bandwidth management

Benefits –

Integrated Wireless and Wired Network Access Control

- Supports Bridge, Router and NAT mode, ensuring full compatibility with existing networks
- Flexibility of network resource planning and management through VLAN support
- High efficiency, high flexibility, and low equipment cost

Powerful Network Security Capabilities

- Integrated user authentication based on industry standards
- Data packets filtering through built-in firewall improves the management of data transmission

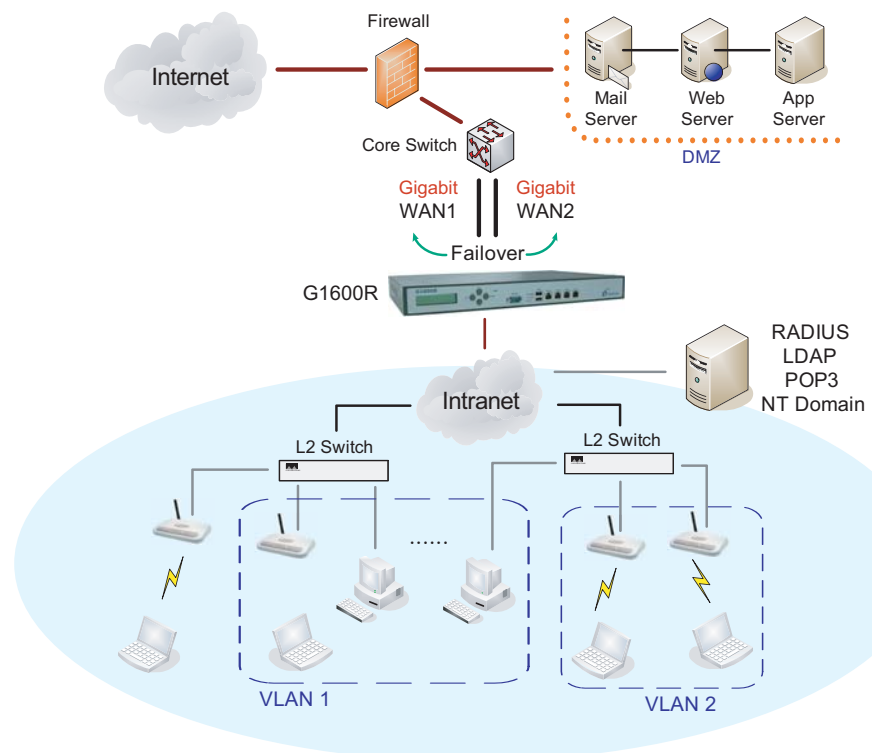
Comprehensive User Management Platform

- Simultaneous support for internal and external user authentication options
- Easy management of guest access to wireless network
- Policy-based control approach enhances the management of multiple categories of users
- Flexible network access control across LAN segments, and between LAN and WAN
- Individual bandwidth limiting on upper link enables flexible traffic control for different scenarios

Flexible Accounting Engine

- Offers different service levels based on bandwidth, time, or number of access
- Provides detailed per-user traffic history log for analysis and record keeping
- Supports multiple accounting mechanisms and external RADIUS accounting
- Easy integration with leading third-party hotel PMS (Property Management System)

Target Deployments – Mid-size Campus, Hotel, MTU/MDU



Wireless Service Gateway

Cipherium G1600R



Networking

- Supports Bridge, Router, NAT mode
- Supports VLAN Tagging (IEEE 802.1q)
- Supports Static IP, DHCP, and PPPoE mode on WAN interface
- Supports configurable authentication for each LAN port
- Supports IP Plug and Play (IP PnP)
- Supports Inter-subnet roaming
- Built-in DHCP server and support for DHCP relay
- Supports NAT:
 - (a) DMZ Server Mapping
 - (b) Virtual Server Mapping
 - (c) IP/Port Destination Redirection
 - (d) H.323 Pass-Through
- Supports static route
- Supports SMTP redirection
- Supports Walled Garden (free surfing zone)
- Supports MAC Address Pass-Through
- Supports HTTP Proxy
- Supports failover on dual WAN ports

Security

- Supports data encryption: WEP (64/128-bit), WPA, WPA2
- Supports authentication: WPA-PSK, WPA2-PSK, IEEE 802.1x (EAP-MD5, EAP-TLS, CHAP, PEAP)
- Supports VPN Pass-Through (IPSec and PPTP)
- Supports DoS attack protection
- Supports MAC Access Control List
- Supports user Black List
- Allows MAC address and user identity binding for local user authentication

User Management

- Supports up to 500 concurrent users
- Provides 2,500 local accounts
- Provides 2,000 on-demand accounts
- Simultaneous support for multiple authentication methods (Local and On-demand accounts, POP3(S), LDAP, RADIUS, NT Domain)
- Policy-based access control (including Firewall policies, Routing, Login Schedule, and Bandwidth)
- Role-based access control (based on policy setup from above)
- User Session Management:
 - (a) SSL protected login portal page
 - (b) Supports multiple logins with one single account
 - (c) Session idle timer
 - (d) Session/account expiration control
 - (e) Notification email to provide a hyperlink to login portal page
 - (f) Windows domain transparent login
 - (g) Configurable login time frame

Accounting and Billing

- Support for RADIUS accounting, RADIUS VSA (Vendor Specific Attributes)
- Provides API for Micros-Fidelio PMS (Property Management System)
- Built-in billing profiles for on-demand accounts by time (hour) and data volume (MB)
- Enables session expiration control for on-demand accounts by time (hour) and data volume (MB)
- Detailed per-user traffic history based on time and data volume for both local and on-demand accounts
- Traffic history report in an automatic email to administrator
- Support Authorize.net credit card payment

Monitoring and Reporting

- Status monitoring of on-line users
- IP-based monitoring of network devices
- WAN connection failure alert
- Supports syslog for diagnosing and troubleshooting
- User traffic history log

System Administration

- Multi-lingual, web-based management UI
- Customizable login and logout portal page
- SSH remote management
- Remote firmware upgrade
- NTP time synchronization
- Console management interface support
- Backup and restore of system configuration
- Configurable redirected home page

Hardware Specifications

- Form Factor: 19" 1U Rack Mount
- Dimensions (W x D x H): 426 mm x 270 mm x 44 mm
- Weight: 6 Kg
- Operating Temperature: 0 ~ 40 °C
- Power: 90~264 VAC, 47~63 Hz
- WAN Ports: 2 x 10/100/1000 BASE-T RJ-45
- LAN Ports: 2 x 10/100/1000 BASE-T RJ-45
- Console Port: 1 x RS-232 DB9
- LED Indicators: 1 x Power, 1 x Link Status, 4 x Ethernet Connect
- LCD Panel: 16 Characters x 2 Lines
- Certifications: CE, FCC
- RoHS compliance: Yes

